

# FALCON HOLD

## For DeAgostini Kit ISSUES 7-14



ParaGrafix states that our use of the trademarked terms listed below in our product descriptions constitutes fair use and nominative use and is in no way to offer confusion that ParaGrafix and any of the following noted trademark holders are related companies, nor do we state that we are endorsed by these trademark holders. We are an AFTERMARKET company acting in GOOD FAITH in providing high quality products to loyal customers who have already purchased products related to these trademarks. ParaGrafix is actually providing these trademark holders a venue of free advertising and indirectly provide these trademark holders with more sales leads.  
 © & TM 2015 Lucasfilm LTD. © & TM DeAgostini Publishing USA Inc., DeAgostini Editore S.p.A.

### INTRODUCTION

Thank you for purchasing ParaGrafix's hold upgrade set for the Millennium Falcon subscription kit from DeAgostini Publishing. This set is intended for modelers of moderate experience who are handy at modifying existing kit parts.

Please note that these instructions replace some of the kit's instructions for assembling the hold. It is suggested that you familiarize yourself with all aspects of the hold assembly before proceeding.

### Materials

In addition to the photoetch, you will also need scissors or a knife\* to remove individual pieces from the main fret, a file to remove material left from cutting, and super glue (aka CA or cyanoacrylate). Additionally, to fold some pieces, you will need a pair of razor blades\*\* or a specialty tool such as PhotoFold from ParaGrafix.

\* We prefer a #17 Xacto chisel blade in combination with a glass cutting board or other, similarly hard cutting surface.

\*\* Extreme care must be taken when using razor blades. Risk of serious injury.

### Raised Detail

Where applicable, these instructions note an area where the raised kit detail must be removed. This may be done in whatever way you are most comfortable: sanding, filing, chiseling. Note that in most cases the surface does not need to be perfectly smooth as the photoetched part will replace the "lost" kit detail.

### Lighting Options

Unless otherwise noted, you can prep areas for lighting by removing plastic from areas where there are through holes in the photoetch. You can then backlight the photoetch. For best results, we suggest using Micro Kristal Klear from Microscale Industries ([www.microscale.com](http://www.microscale.com)) to fill the through holes before applying the decals.

### Installation Parts Order

The installation steps are not in any particular order. You can complete them as you see fit to complement your kit construction order.

### Decals

Please see JT Graphics' specific instructions for the use of the decals in conjunction with this set.

### Key

Kit part (plastic): **1**

Photoetched part: **1**

Decal: **A**

### Control Console

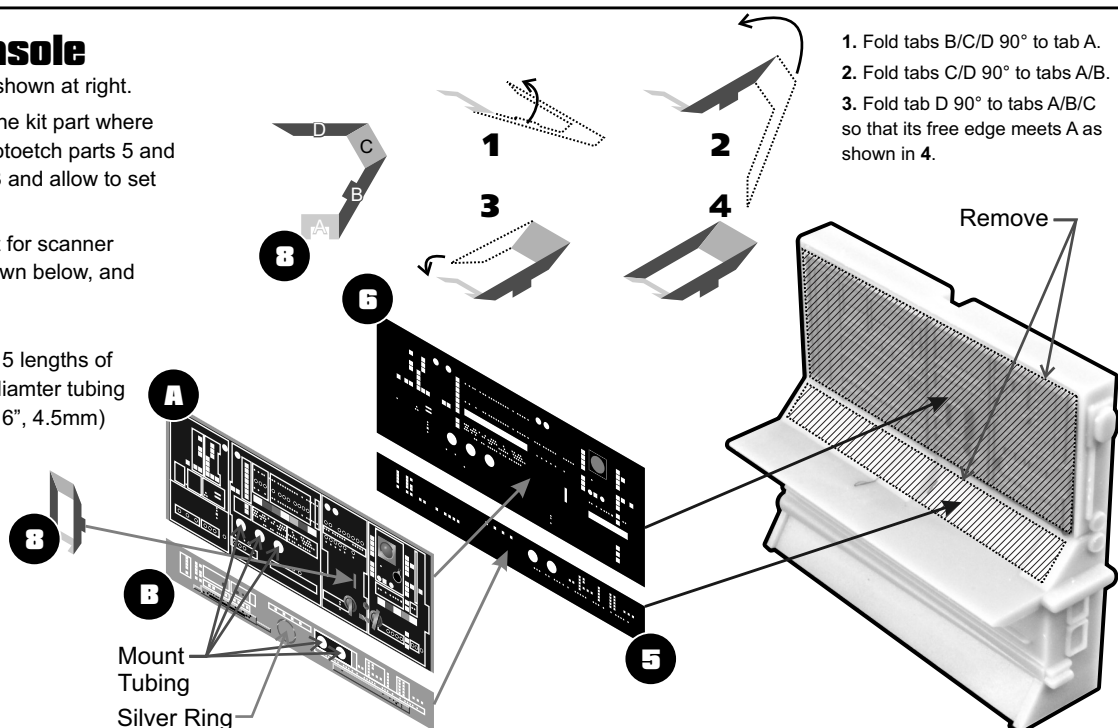
Fold etch scanner 8 as shown at right.

Remove the area from the kit part where indicated and attach photoetch parts 5 and 6. Mount decals A and B and allow to set (1/2 day or so).

Carefully cut out the slot for scanner mounting tab where shown below, and attach scanner.

**Überdetailing:** Cut 5 lengths of 0.062" (1/16", 1.5 mm) diameter tubing approximately 0.18" (3/16", 4.5mm) long and mount at the 5 areas indicated at right.

Cut a single piece of 0.093" (3/32", 4.5mm) tubing and mount it centered on the silver ring.



1. Fold tabs B/C/D 90° to tab A.
2. Fold tabs C/D 90° to tabs A/B.
3. Fold tab D 90° to tabs A/B/C so that its free edge meets A as shown in 4.

Mount  
Tubing  
Silver Ring

## Hold Floor

### Access Panel Sidewalls (optional)

These sidewalls may be omitted if you do not want to show the Falcon undergoing repairs.

**NOTE:** Before mounting the access panels, use part 5 (the main floor) to mark the location where the floor should be cut out. See the next section "Installing the Floor" to see where it fits.

**PLEASE NOTE:** The mounting tabs on parts 11 (fret B) will overlap the grating of the floor. There are two ways to alleviate any potential problems:

1. Fold to sidewalls as shown at right, then invert them over the cutout mark made in the above note and mark the notched outline of the tabs.

File or sand at least 0.01" (0.25mm), or cut completely through, within that outline as a relief area to accommodate the tabs.

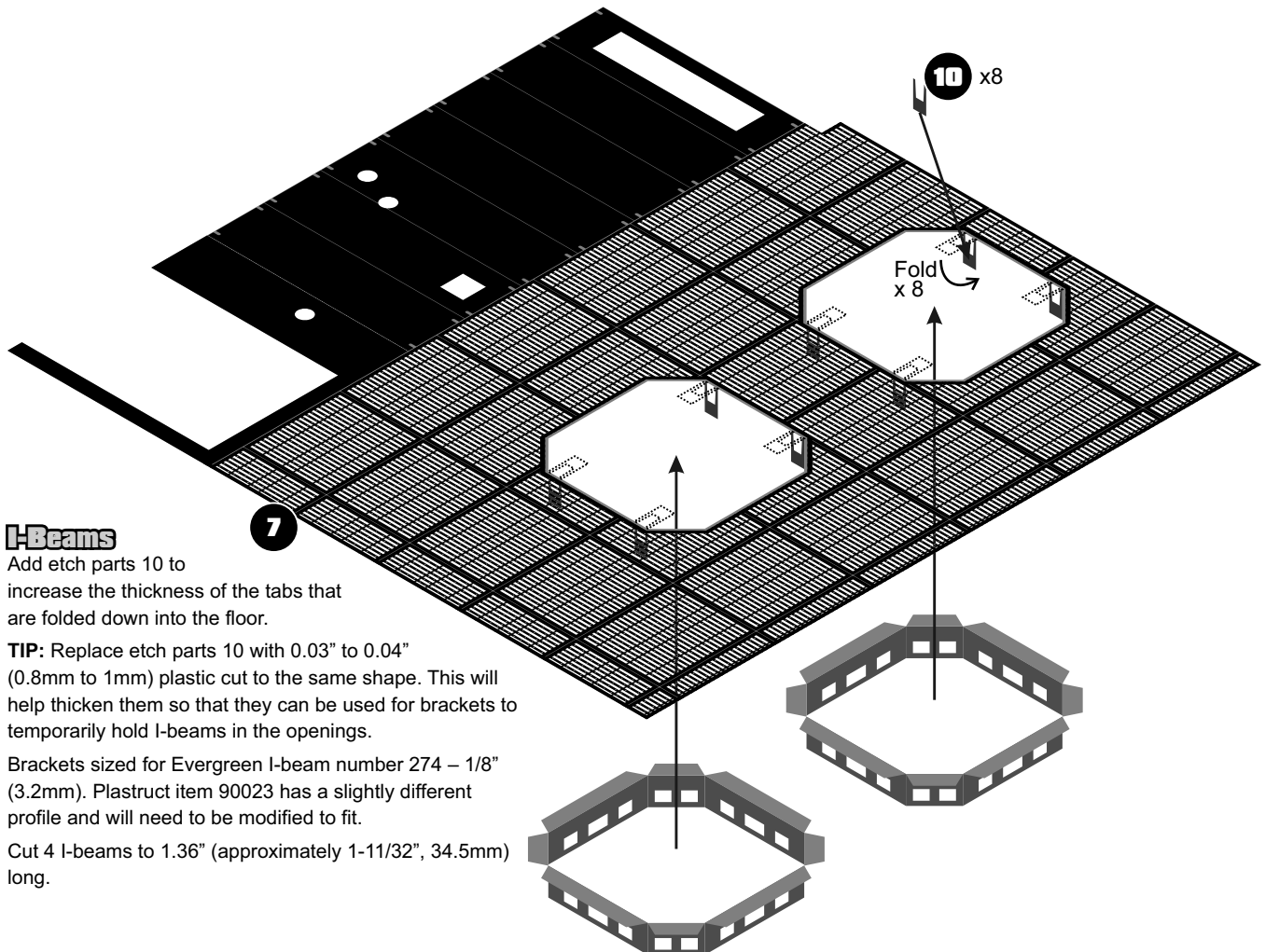
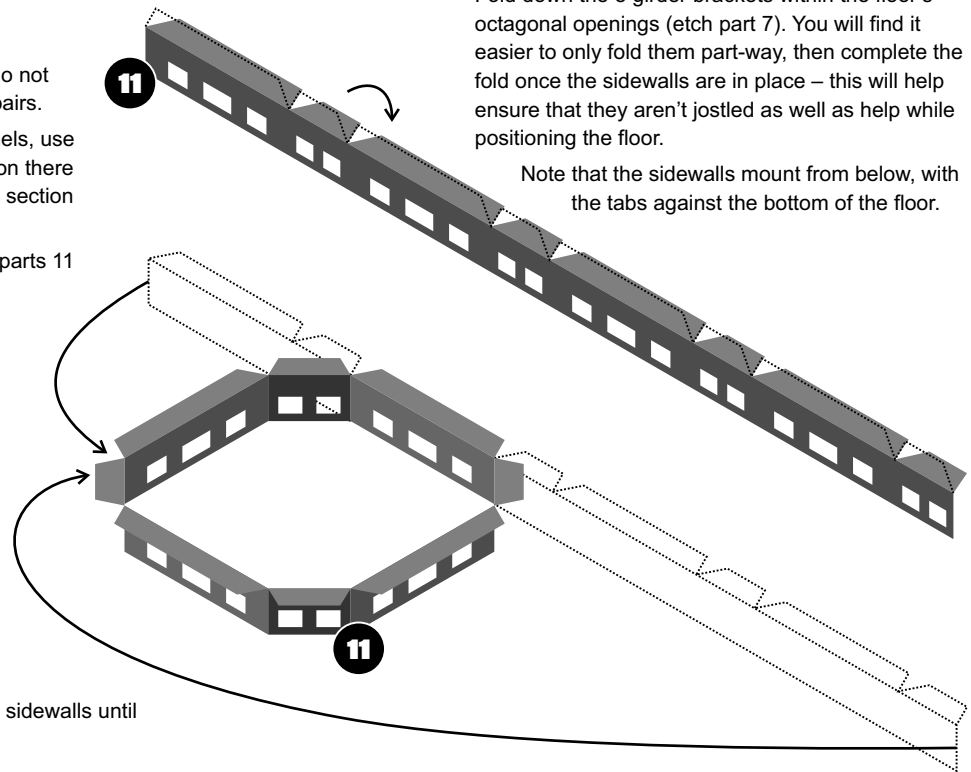
2. Fold the tabs back and forth several times so that they snap off. This will make their connection far less strong so you will want to hold off attaching the sidewalls until after the floor is installed.

Continued at right.

## Mount Sidewalls

Fold down the 8 girder brackets within the floor's octagonal openings (etch part 7). You will find it easier to only fold them part-way, then complete the fold once the sidewalls are in place – this will help ensure that they aren't jostled as well as help while positioning the floor.

Note that the sidewalls mount from below, with the tabs against the bottom of the floor.



## I-Beams

Add etch parts 10 to increase the thickness of the tabs that are folded down into the floor.

**TIP:** Replace etch parts 10 with 0.03" to 0.04" (0.8mm to 1mm) plastic cut to the same shape. This will help thicken them so that they can be used for brackets to temporarily hold I-beams in the openings.

Brackets sized for Evergreen I-beam number 274 – 1/8" (3.2mm). Plastruct item 90023 has a slightly different profile and will need to be modified to fit.

Cut 4 I-beams to 1.36" (approximately 1-11/32", 34.5mm) long.

## Hold Floor

### Open Up Floor (optional)

If you will be displaying the Falcon with the access panels open for repairs (and have installed the sidewalls as indicated on the previous page) cut out the sections of flooring as shown below.

Note that the access panels do not line up with the ones engraved on the kit part. Use the floor grating (etch part 7) as a marking template to determine where to cut. You will want to make the openings a bit larger than those on the photoetch to help ensure that the etch will go in smoothly, without damaging it.

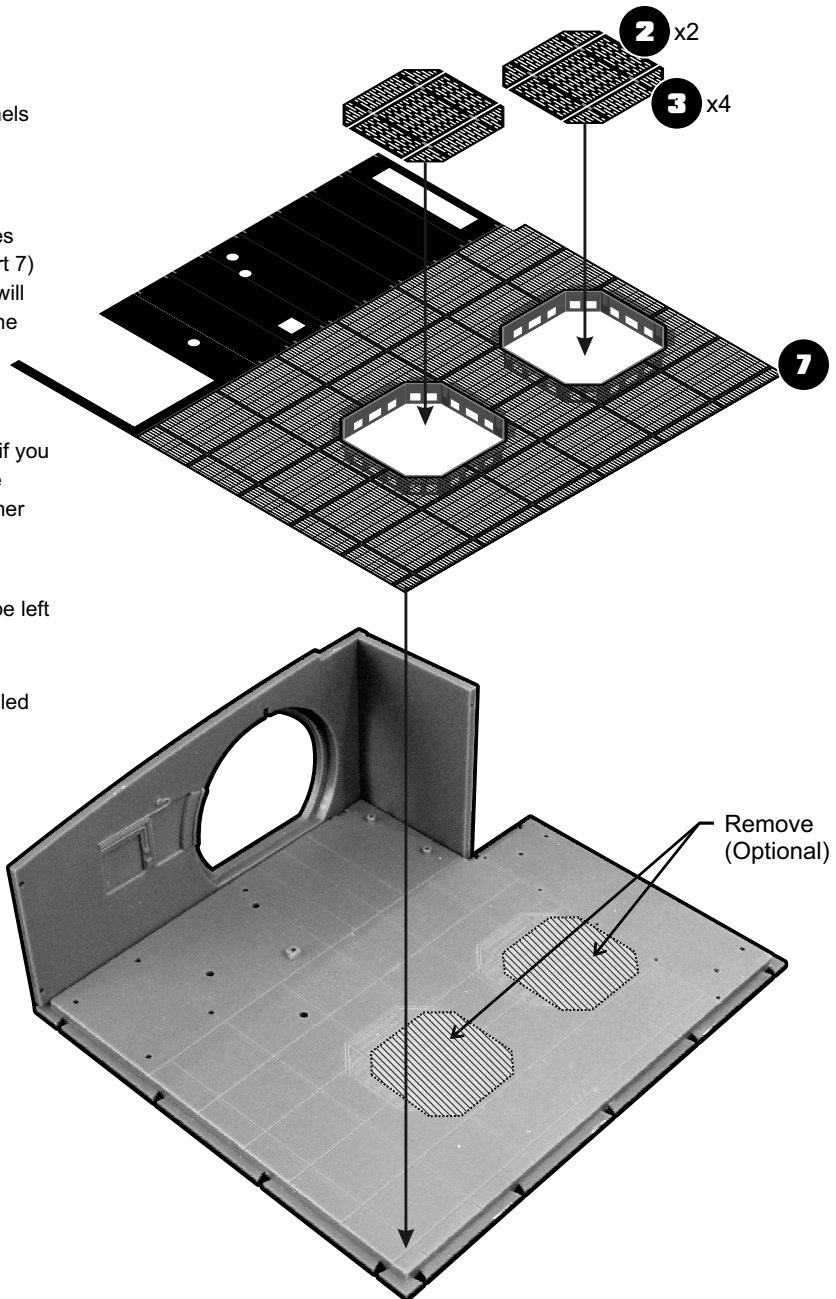
### Final Floor Assembly

**TIP:** You will find it easier to position the floor properly if you temporarily mount two of the walls as shown. Once the adhesive is fully cured you can attach the walls and other hold parts normally.

Attach the assembled floor grating (etch part 7, etc.).

Note that the access panels (etch parts 2 and 3) may be left loose to show the ship undergoing repairs.

The I-beams cut on the previous page may be glued in place or left loose as well since they were shown installed and removed during the movie.



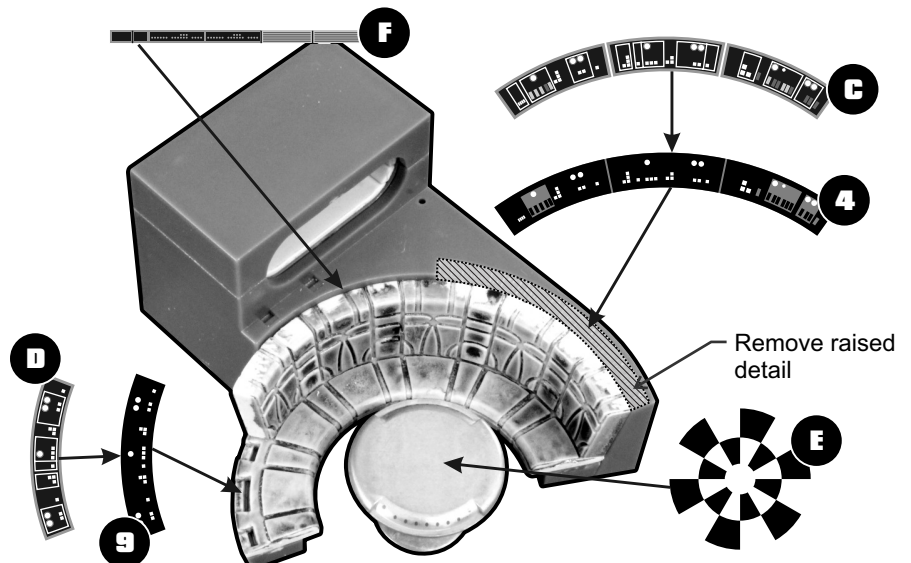
## Dejarik Board and Bench

Assemble the bench per the kit instructions EXCEPT leave off the last large and two small back cushions. Remove the raised detail from the control panel behind the bench.

Attach etch parts 4 and 9 where shown, then place decals C and D, respectively, over them.

Decal F mounts to the very top of the vertical section of the bench housing, to the left of etch/decals 4/C.

Place decal E on the Dejarik board top.



## Door Rings

### Ring Mounts

The etch parts (1) require a surface to mount them to, as well as the inner ring surface. You can either modify the kit parts, or do some scratch building.

**Modify Kit Parts:** File open up the holes of the kit's two door rings so that the photoetch has an unobstructed view when placed over it. Alternatively, fill in the holes so that they aren't visible. (You needn't worry about the space below the door on the port-side wall.)

**Scratch Building:** Cut 5/32" x 0.03" styrene strip (Plastruct #MS-316, Evergreen #137, 0.75mmx4.0mm) to 0.17" (4.3mm) sections. Using the included templates, attach these 9 of these at 30° intervals inside the door ring area where the kit part would have gone. (See the layout at right, with the locations shown as they appear on a clock face.) Note that these sections will extend past the inner edge of the frame.

Add two more pieces, cut to 0.21" (5.3mm), at the bottom.

**Überdetailing:** Cut the ribs into "C" shapes with the opening facing the photoetch and fill the space between them with wires and tubing to simulate the full-sized set.

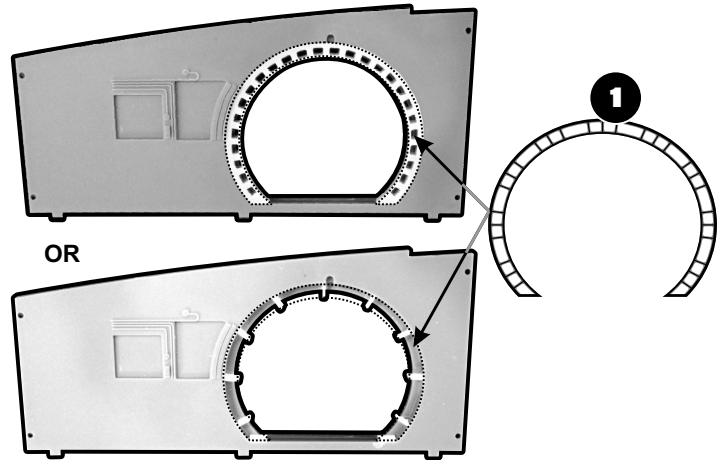
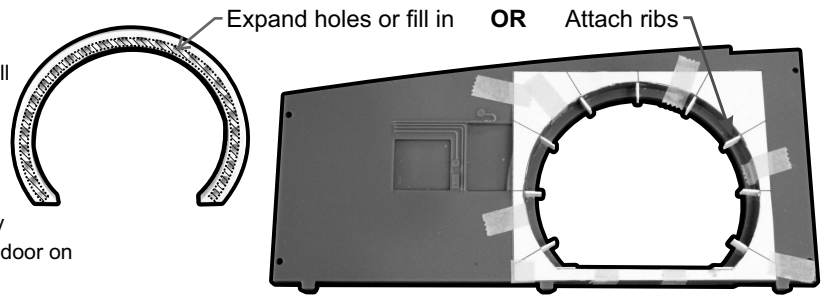
### Attach Rings

Note that the two kit provided rings are different heights and only fit one door. The photoetched rings are identical and will fit either door.

Attach either the modified kit rings or the scratch built mounts to the two wall sections. (Only one wall is shown.)

To help ensure that you don't damage the photoetch, it is suggested that you attach the walls to the floor section before attaching the photoetch.

Mount the photoetch parts to the walls, then attach the padding sections (assembled according to the kit's instructions) to the inner surface of the kit ring or the scratch built ribs.



### Complete Assembly of the Hold

Complete the assembly of the hold per the kit's instructions. Note that you may have to modify some of the piping that fits around the door as the rings were designed for accuracy to the original set's parts, not the kit's piping.

## DECAL INSTRUCTIONS

Decals are best applied to a glossy surface. Apply glossy paint or spray a clear gloss coating on your model before applying decals. Carefully cut out the decal from the sheet and, using tweezers, dip the decal into plain water for 5 seconds or until the blue backing changes to a darker blue.

### WARNING:

Leaving the decal in the water too long may result in the glue washing off the decal. Lay the decal on your work surface for 30 seconds, and then slide the decal off the backing paper into position on your model. Gently blot the excess water. Allow to dry. Once the decals have dried thoroughly, you can use a sharp knife to gently cut and remove the excess decal film. Apply a second coat of clear finish over the model to seal the decals.

A decal set may be used to help the decal conform to irregular surfaces and hides the decal film. This makes the artwork appear to be painted on the model, rather than applied by decal.

Another method used is to create an equal mixture of water and white glue (Elmer's). Using a brush, apply the mixture to the surface. While still wet, apply the decal. The glue will help the decal adhere to the surface and will dry clear. Once dry, wet a Q-tip and remove any excess glue from the model and decal by brushing out from the center of the decal. Brushing into the center may cause the decal edge to lift.

### Important: Please Read

The JT-Graphics decals you have purchased are coated with Testor's Clear Flat Lacquer. Using an Enamel clear coat such as Krylon or Rustolium may cause damage to the decal.

A known fact is that you can apply lacquer over enamel, but not enamel over lacquer. Therefore, it is suggested that after applying the decals, you only coat (seal) your model with a lacquer clear coat to avoid damaging the decals. Acrylic enamel may not react to the lacquer, but it has not been tested. Another suggestion is to use a piece of the decals, (such as the JT-Graphics logo or an optional decal you do not plan on using) and test it. Apply your test decal to a painted surface similar to the one you will be applying to and test it against the clear coat you wish to use.

Besides using Testor's Clear lacquer as a sealer, you can also use Future Floor Wax as a clear coat.

Any problems or Questions contact:

Jeffrey Waclawski 410-574-3220

info@jt-graphics.com

*JT-Graphics*<sup>TM</sup>  
.com

**PARA  
GRAFIX**<sup>TM</sup>

104 County Street, Suite 101  
Attleboro MA 02703 USA  
+1 508-431-9800  
www.ParaGrafix.biz

Special thanks to Iain "Small Scale Futures" Costall for providing UK issues 1 through 8 to aid in the development of this set.