

# 8-Window Movie & 1st Season TV SEAVIEW™

VOYAGE  
TO THE  
BOTTOM  
OF THE SEA™

THE FANTASY WORLDS  
OF IRWIN ALLEN®

Photoetch Set

PGMS™  
ParaGrafix™  
Modeling Systems

P/N: PGX160

## INTRODUCTION

Thank you for purchasing ParaGrafix's photoetched enhancement set for the Moebius Models XXX. We have made every effort to ensure that these parts can be used successfully by a modeler of modest experience, but there may be items that require advanced modeling techniques. For a basic primer on the use of photoetch, please visit <http://www.paragrafix.biz/video-instructions-1.asp> and other resources available on the web.

### Materials

In addition to the photoetch, you will also need scissors or a knife\* to remove individual pieces from the main fret, a file to remove material left from cutting, and super glue (aka CA or cyanoacrylate). Additionally, to fold some pieces, you will need a pair of razor blades\*\* or a specialty tool such as an Etchmate 3C from Mission Models.

\* We prefer a #17 Xacto chisel blade.

\*\* Extreme care must be taken when using razor blades. Risk of serious injury.

### Key

Kit part (plastic):

1

Photoetched part:

1

## Observation Lounge

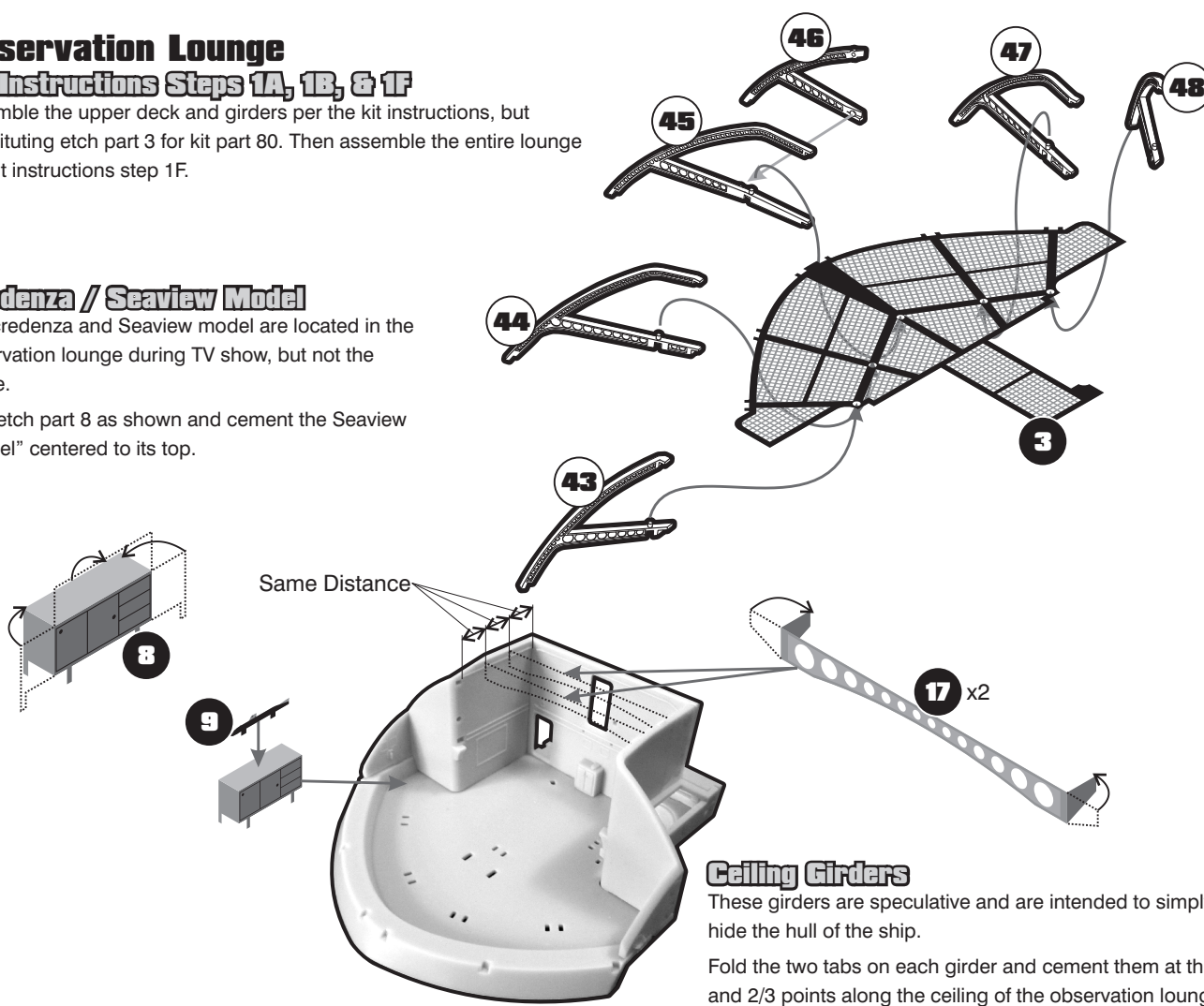
### Kit Instructions Steps 1A, 1B, & 1F

Assemble the upper deck and girders per the kit instructions, but substituting etch part 3 for kit part 80. Then assemble the entire lounge per kit instructions step 1F.

### Credenza / Seaview Model

The credenza and Seaview model are located in the observation lounge during TV show, but not the movie.

Fold etch part 8 as shown and cement the Seaview "model" centered to its top.



### Ceiling Girders

These girders are speculative and are intended to simply hide the hull of the ship.

Fold the two tabs on each girder and cement them at the 1/3 and 2/3 points along the ceiling of the observation lounge.

## Sail

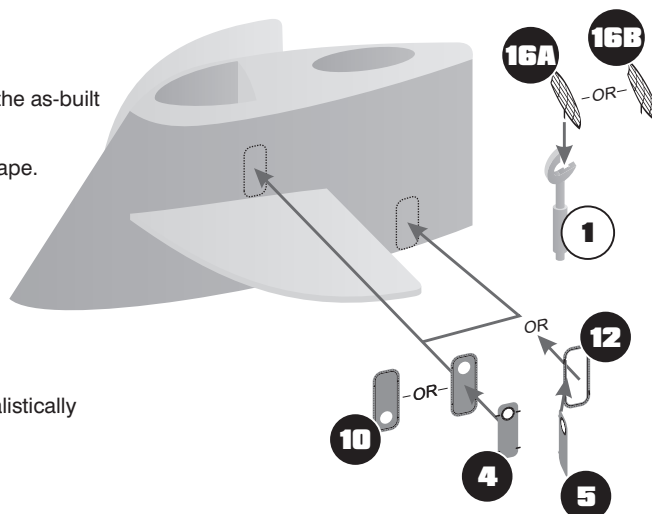
### Kit Instructions Step 2

Replace kit antenna (part 54) with etch part 16A or 16B. 16A matches the as-built studio miniature which 16B matches the studio blueprints.

Note that the antenna can be formed to give it the proper parabolic shape. You may find it easier to anneal the piece(s) before forming.

The etch sail doors match the bolted-in-place ones used in the full sized set. Before attaching the doors, file off the existing kits ones. If you will be lighting your sail, you can position etch parts 10 with their hole facing up so that light shows through.

An alternate, open door (etch parts 5 and 12) are also provided. To realistically show the door open, you will need to cut a hole in the side of the sail.



## Grab Handles

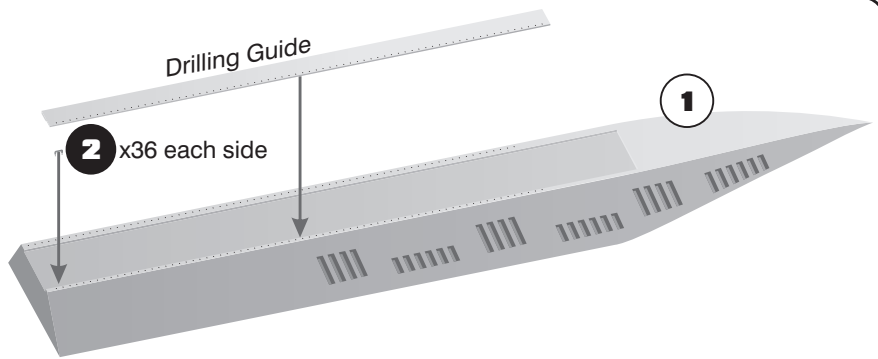
### Kit Instructions Step 3E

Prior to attaching the rear deck (part 22):

Remove the kit grab handles and smooth the remaining deck area.

Align the drilling guide's groove with the inside edge of the grab handle area and drill pilot holes using a 0.015" (0.4mm) bit.

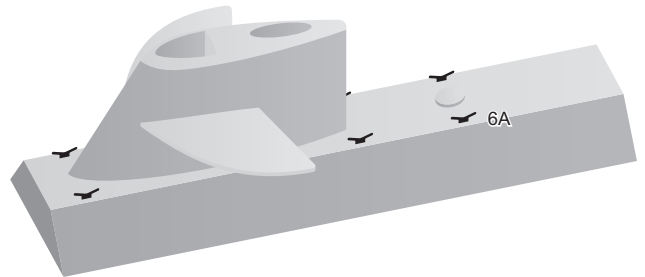
Attach the rear deck and smooth the seam before attaching the grab handles (etch parts 2).



## Cleats

### Kit Instructions Step 3E

Seen only on the full scale set, there are 3 pairs of cleats at the locations shown at right. Use a 0.015" (0.4mm) drill bit to make pilot holes for the cleats and glue in place.



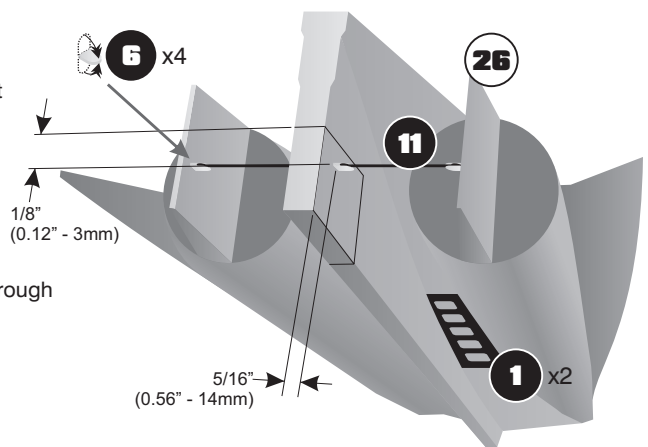
## Rudder Tie Rods and Lower Drain Holes

### Kit Instructions Step 4A

Fold the four tie rod brackets (etch parts 6) and glue into the positions shown at right. Insert the two tie rods (etch parts 11) and glue in place.

The drain holes (etch parts 1) may be surface mounted or used as cutting guides (this is more accurate).

If surface mounting the drains to an R/C model, paint the kit and etch before attaching them using RTV sealant (the blue gasket making material available in most auto parts stores). This will allow the bond to flex as the model goes through the temperature changes experienced by a R/C submarine.



## Limber Holes

### Kit Instructions Step 4

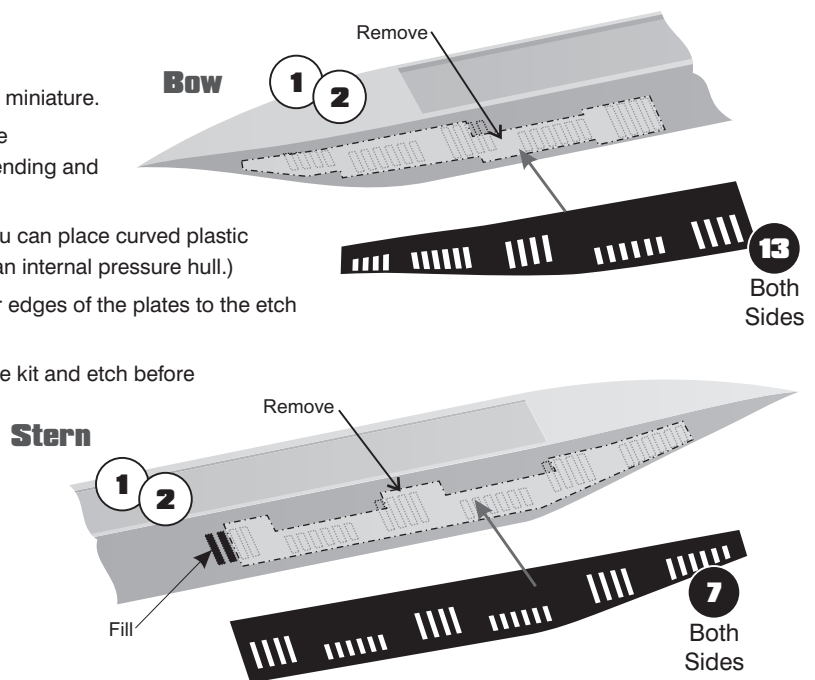
Note that the limber holes replicate the 17' (large) filming miniature.

Anneal the limber hole plates (etch parts 7 and 13) before proceeding so that the parts will hold their shape after bending and not try to spring back.

Remove material as shown to provide through-holes. (You can place curved plastic following the contour of the round outer hull to simulate an internal pressure hull.)

Apply the limber hole plates as shown, aligning the lower edges of the plates to the etch of the kit parts.

If you are building the Seaview as an R/C model, paint the kit and etch before attaching them using RTV sealant as with the drain holes in the previous step.



Thank you to Frank Winspur and Dave Metzner of Moebius Models for making such a great kit, their help and encouragement during the development of this add-on set, and providing a pre-release copy of the model. Thank you to David Merriman for his guidance on making this set R/C compatible. Thank you to Gary Kerr for his, as always, generous help on getting the details right.

**PGMS**  
**ParaGrafix**  
Modeling Systems

148 Rocklawn Ave.  
Attleboro MA 02703 USA  
+1 508-431-9800  
www.ParaGrafix.biz

VOYAGE  
TO THE  
BOTTOM  
OF THE SET™

MOEBIUS®

THE FANTASY WORLDS  
OF IRWIN ALLEN®

"Voyage to the Bottom of the Sea"™ is © Irwin Allen Properties, LLC and Twentieth Century Fox Film Corporation. Licensed by Synthesis Entertainment. All Rights Reserved. "The Fantasy Worlds of Irwin Allen"® is a registered trademark of Synthesis Entertainment. All Rights Reserved. Moebius® is a registered trademark of Moebius Models. All Rights Reserved. ParaGrafix™ and PGMS™ are TM Paul H. Bodensiek. All Rights Reserved.