

ENTERPRISE-D PHASER STRIPS

DON'S LIGHT & MAGIC
DLM

PARA
GRAFIX™
PGX238

ParaGrafix states that our use of the trademarked terms listed below in our product descriptions constitutes fair use and nominative use and is in no way to offer confusion that ParaGrafix and any of the following noted trademark holders are related companies, nor do we state that we are endorsed by these trademark holders. We are an AFTERMARKET company acting in GOOD FAITH in providing high quality products to loyal customers who have already purchased products related to these trademarks. ParaGrafix is actually providing these trademark holders a venue of free advertising and indirectly provide these trademark holders with more sales leads. Star Trek is a trademark of Paramount Pictures Corporation. Polar Lights is a registered trademark of Learning Curve Brands, Inc.

INTRODUCTION

ParaGrafix is pleased to rerelease the classic Enterprise-D phaser strip set we originally produced exclusively for Don's Light and Magic (DLM). This set updates the Polar Lights 1/1400 scale NCC-1701-D kit to match the "upgraded" phaser strip details on the second, four foot, filming miniature.

Please note: these parts are extremely thin and fragile. Experience with working with photoetched parts is *highly recommended*.

TOOLS & MATERIALS

In addition to the photoetch, you will also need scissors* or a knife** to remove individual pieces from the main fret, a file to remove material left from cutting***, and super glue**** (aka CA or cyanoacrylate).

Slow setting super glues are preferred as they allow time for shifting parts around to ensure the best fit possible.

In addition to super glue, temporary adhesives, such as Microscale Industries' Liquid Tape, are useful during the test fitting stage and for holding in place during installation.

* Xuron's Professional Photoetch Scissors (9180ET) are ideal for cutting this set's extremely thin brass.


** We prefer a #17 Xacto chisel blade.

*** Diamond files have a random surface texture that is less likely to catch and bend photoetched parts. Zona's set number 37354 is an excellent choice.

**** Creative Dynamic's Glue Looper is an excellent super glue applicator.

Key

Photoetched part: 

Alignment: 

BASIC INSTALLATION TEST FITTING

It is suggested that you test fit parts before doing any forming or gluing to ensure that you understand how all pieces are arranged. If you find, for instance, that a section of photoetch phaser cover will end up being a bit short, the kit part can be filed to ensure the best fit possible. See figure 1.

Due to their size, and for ease of assembly, the two main primary hull phaser strips are each made of multiple parts. These should be test fit and attached starting at the forward, center area of the strip, then working right/left and backwards. (See figure 3, and the placement diagrams on the next page.)

PREFORMING

The phaser strip pieces should be preformed before installation. This can be done by rolling the parts lengthwise over the handle of a large paint brush handle. See figure 2.

Remember, this photoetch is only 0.003 inch (0.76 mm) thick and is, therefore, very easy to kink. Be very careful when working with this photoetch.

ATTACHING PHOTOETCH PHASER COVERS

We suggest tacking individual phaser strip pieces with Liquid Tape, or similar product, to help aid proper alignment of parts. Allow the "tape" to dry for about 10 minutes, then press the photoetch over the phaser strip to complete the forming. (They will likely spring back a bit, this is normal.)

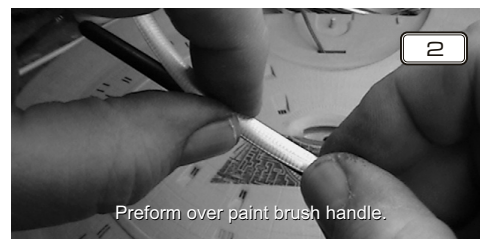
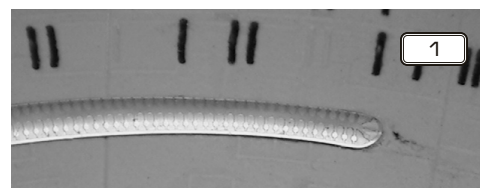
Finally, use a fine tipped applicator to apply super glue, allowing the glue to wick under the photoetch. Finish pressing the parts in place before the glue sets.

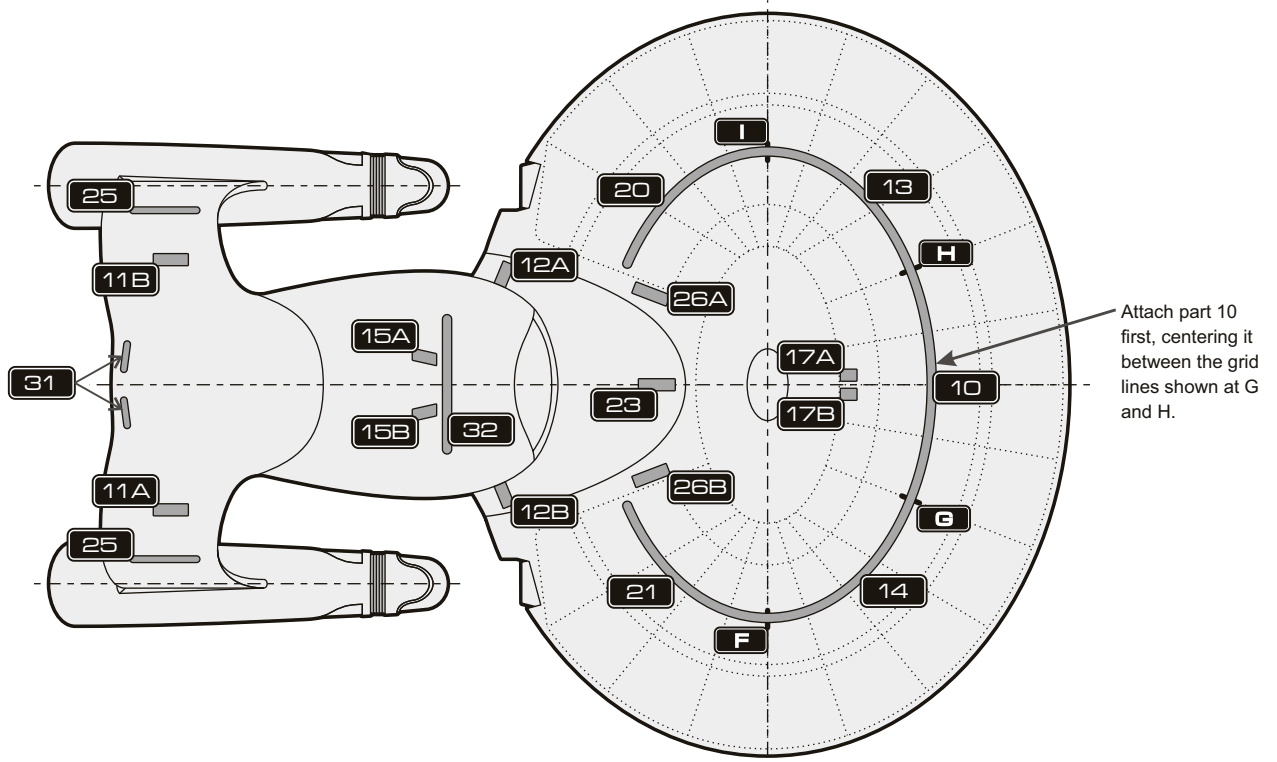
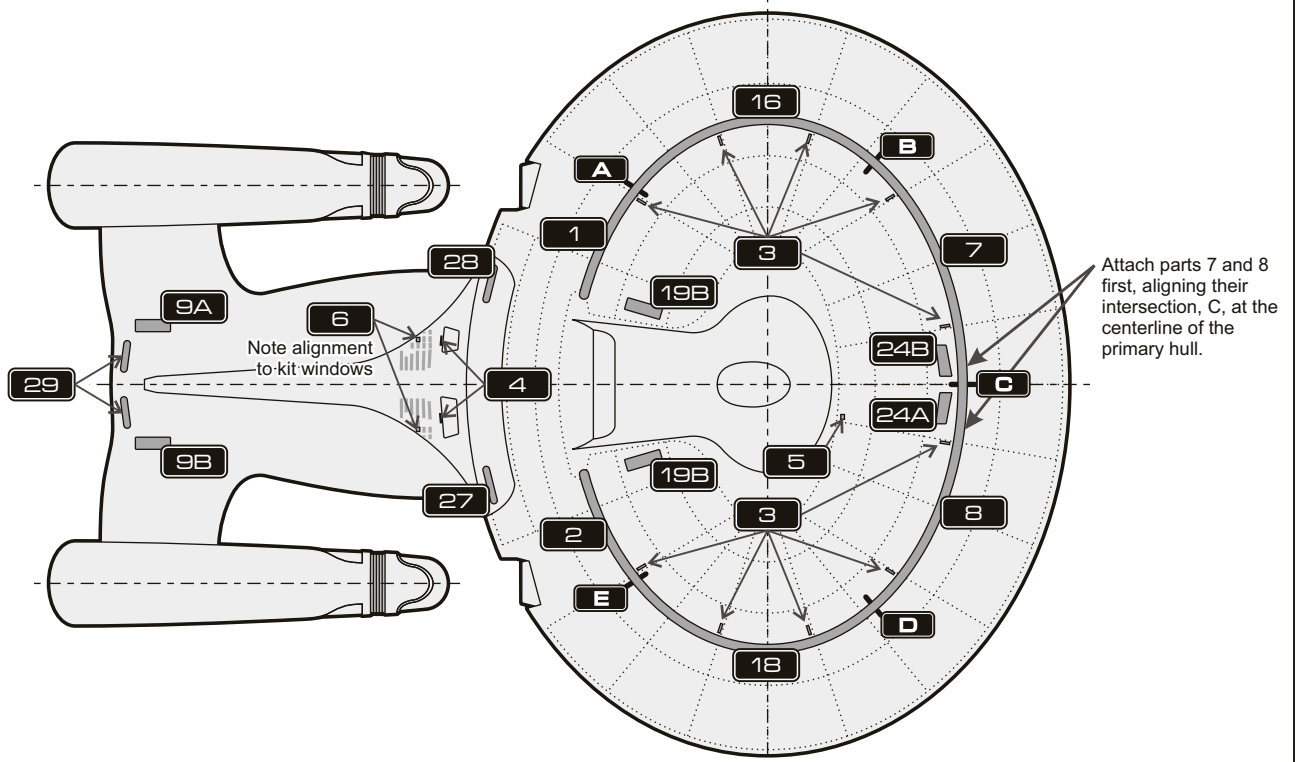
Immediately clean up any excess glue before it sets.

ATTACHING TRANSPORTER EMITTERS AND OTHER DETAILS

Compared to the phaser strips, the transporter emitters and other small details are very easy to work with. Simply tack them down with super glue. That's all there is to them.

See figure 4.





ParaGrafix, Inc.
 Attleboro MA 02703 USA
 +1 508-431-9800
 www.ParaGrafix.biz

Copyright © 2010 Don Matthis dba DLM, © 2021 ParaGrafix, Inc. All Rights Reserved.
 ParaGrafix is a trademark ParaGrafix, Inc.