

Cut to 9" tall and 7-1/4" wide, then fold to 3-5/8" wide x 4-1/2" tall with masthead out.



INTRODUCTION

Thank you for purchasing this passenger cabin upgrade set for the venerable "Land of the Giants" *Spindrift* kit. With only a few simple modifications, the passenger cabin will be far more accurate to the filming set as well as more visually appealing.

In addition to the usual glues, adhesives, tools, and paints required for the rest of the kit, we suggest the following additions:

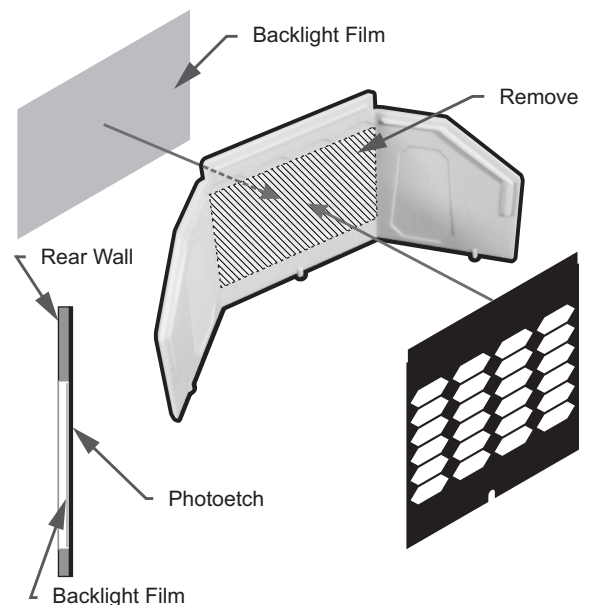
Clear Parts Adhesive: Microscales' Micro Krystal Klear or Testors' Clear Parts Adhesive and Window Maker. Use one of these to attach the colored film to the rear wall and "reading lights" to the ceiling (each as noted later in the instructions).

Super Glue or Epoxy: The photoetched and resin parts **can not** be attached with standard polystyrene modeling glues. Use super glue (AKA CA / cyanoacrylate) or epoxy cement instead.

Drill Bits: You will need a 0.75mm (0.03" - 1/32") and a 3mm (0.125" - 1/8") drill bit to make holes to accept the additional seat bases and the ceiling light fixtures. The 0.75mm bit is to make pilot holes and the larger bit will open up the holes to accept the new parts. Note that some filing may be necessary to open the holes to fully accept the parts.

MODIFY ENGINE WALL

Remove plastic from the kit rear wall (7) as shown below. Glue etch part 1 in place over the wall and adhere your choice of the blue, red, or white (plain) film behind the etch.



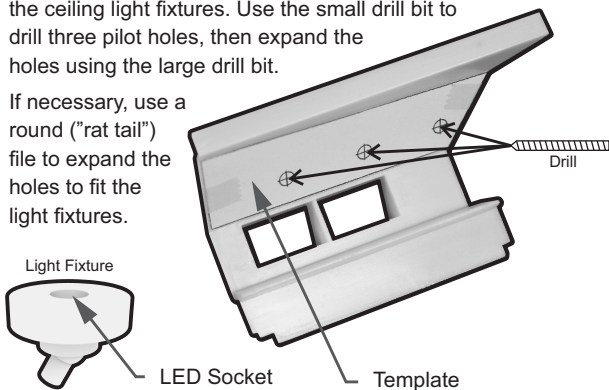
MODIFY CEILING

Repeat Two Times – Once for Each Wall

TIP: Before test fitting, paint the light fixtures with black paint to block light bleed, making sure to leave the “socket” on the back clear of paint – the socket is sized for a 2.8mm LED.

Use the paper templates (see below) to mark the locations for the ceiling light fixtures. Use the small drill bit to drill three pilot holes, then expand the holes using the large drill bit.

If necessary, use a round (“rat tail”) file to expand the holes to fit the light fixtures.

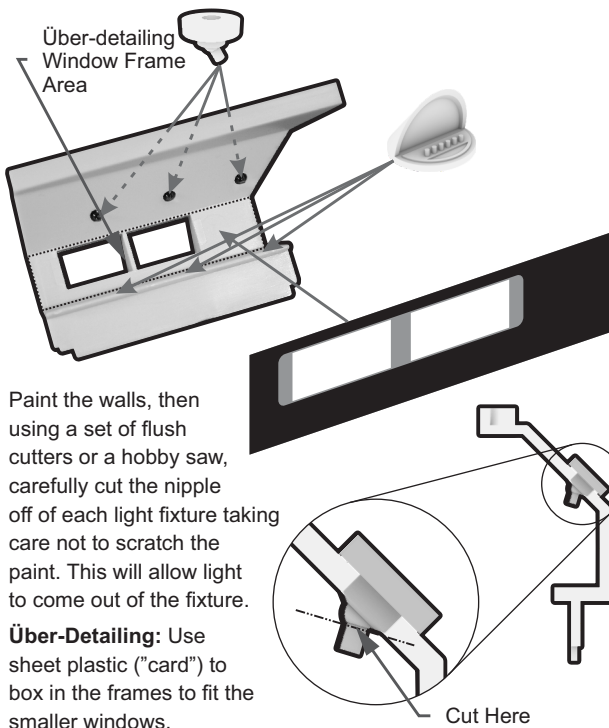


ASSEMBLE WALLS

Repeat Twice – Once for Each Wall

Insert one light fixture into each hole in the wall, making sure that the nipple on each light faces down.

Attach photoetch 2 to the port cabin wall (5) and photoetch part 3 to the starboard cabin wall (6). Attach 3 “computers” to the shelf, directly below each light fixture.



Paint the walls, then using a set of flush cutters or a hobby saw, carefully cut the nipple off of each light fixture taking care not to scratch the paint. This will allow light to come out of the fixture.

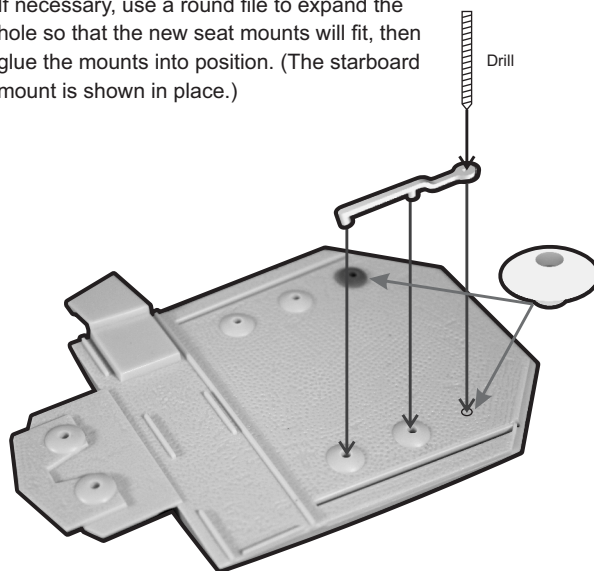
Über-Detailing: Use sheet plastic (“card”) to box in the frames to fit the smaller windows.

MODIFY FLOOR

Repeat Two Times – Once for Each Side

Insert the drilling jig's two pins into the chair mounting holes as shown below. Use the small drill bit to drill a pilot hole in the floor, then remove the jig and expand the hole using the large drill bit.

If necessary, use a round file to expand the hole so that the new seat mounts will fit, then glue the mounts into position. (The starboard mount is shown in place.)



FINAL ASSEMBLY

Attach the walls and seats to the floor per the kit instructions. (Step 1 if following the classic Aurora / Polar Lights instructions. Steps 1 through 3 if following the Doll & Hobby GA instructions.)

TEMPLATES

Use the templates below as guides for locating the ceiling light fixtures as outlined in “Modify Ceiling”. Feel free to photocopy these templates for your own personal use.

