

Enterprise Bridge

1 / 1000 Scale
for POL999M

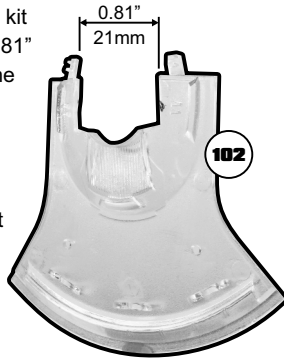


INTRODUCTION

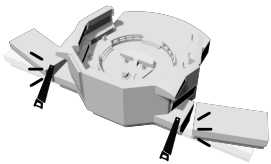
Thank you for purchasing this bridge for the Star Trek: Strange New Worlds Enterprise kit. You can install the bridge immediately, or do a couple of quick modifications to bring the bridge right up underneath the dome.

Please note that superglue (AKA CA, or cyanoacrylate) can fog the kit's clear parts. We suggest the use of epoxy cement to hold the bridge in place.

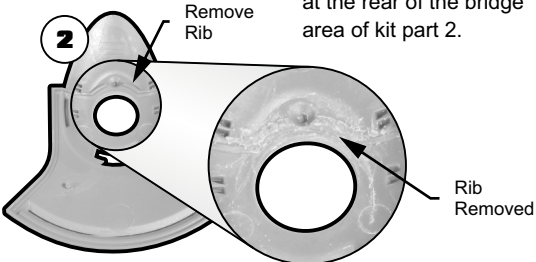
Cut out the bridge area from kit part 102. Remove at least 0.81" (21mm) wide, up to where the window begins.



Remove the two "wings" from the bridge. The resin can be brittle, so we suggest using a saw.

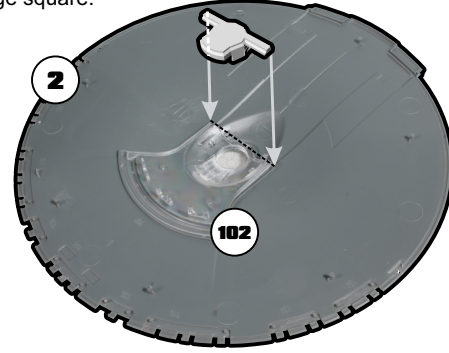


Removed the raised rib at the rear of the bridge area of kit part 2.



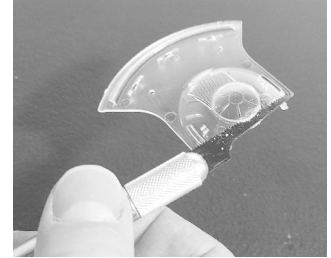
EASY INSTALLATION

Simply glue the bridge part in place, aligning the rear edges of the "wings" with the rear end of kit part 102 to keep the bridge square.



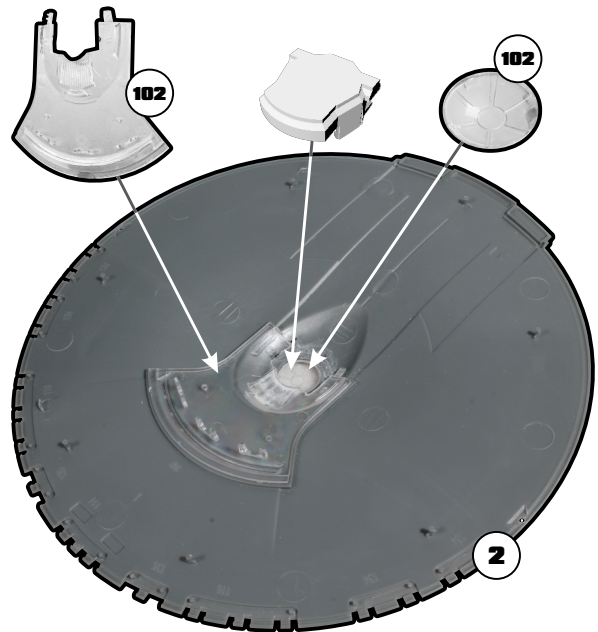
MODIFIED INSTALLATION

Modify Kit Parts
Remove the dome from kit part 102.



Install the Bridge

Install the two parts of kit part 102 normally, then mount the bridge part so it fits snugly against the hull (2).



ParaGrafix states that our use of the trademarked terms listed below in our product descriptions constitutes fair use and nominative use and is in no way to offer confusion that ParaGrafix and any of the following noted trademark holders are related companies, nor do we state that we are endorsed by these trademark holders. We are an AFTERMARKET company acting in GOOD FAITH in providing high quality products to loyal customers who have already purchased products related to these trademarks. ParaGrafix is actually providing these trademark holders a venue of free advertising and indirectly provide these trademark holders with more sales leads.

Star Trek is a trademark of CBS Studios Inc. Polar Lights, AMT and Round 2 are registered trademarks of Round 2, LLC.