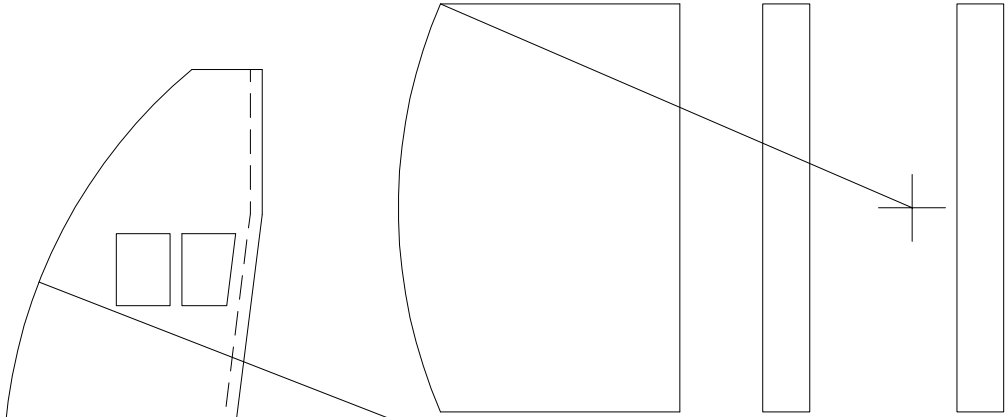
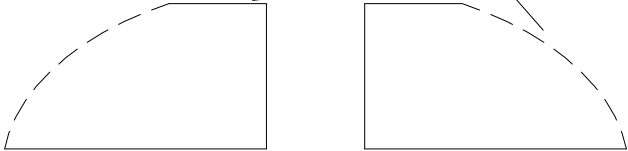


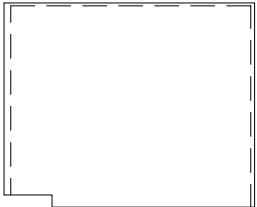
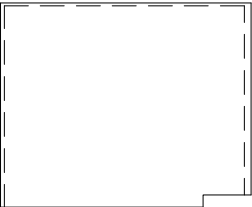
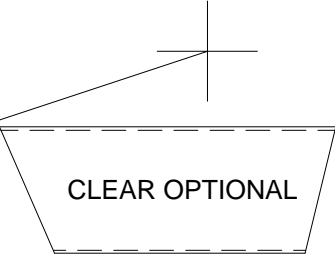
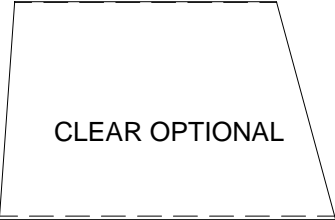
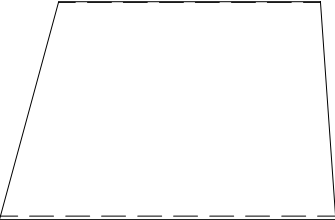
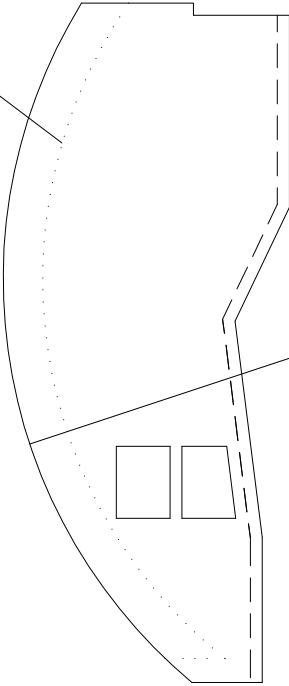
UNLESS NOTED, ALL PIECES ON THIS SHEET 0.06 STOCK



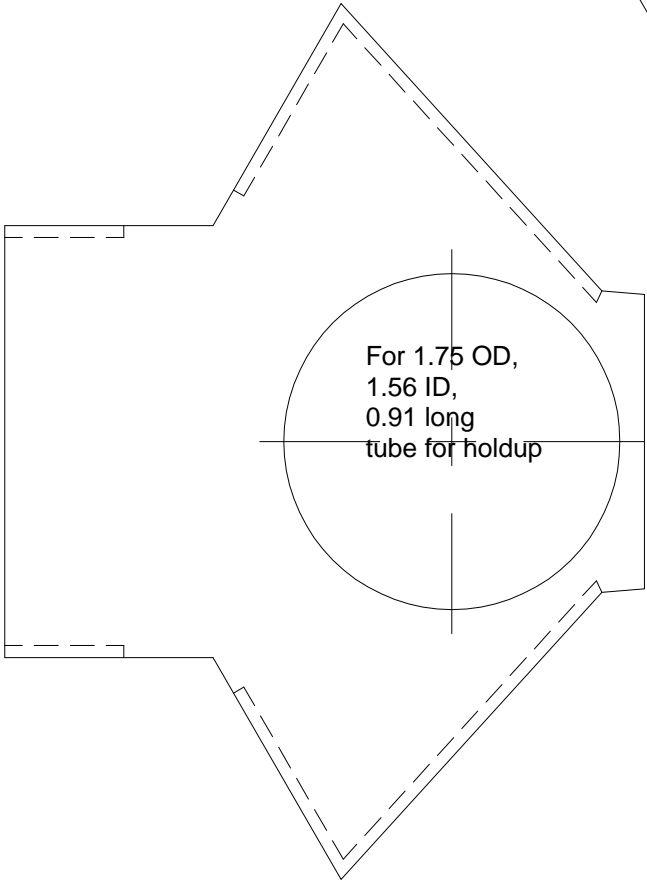
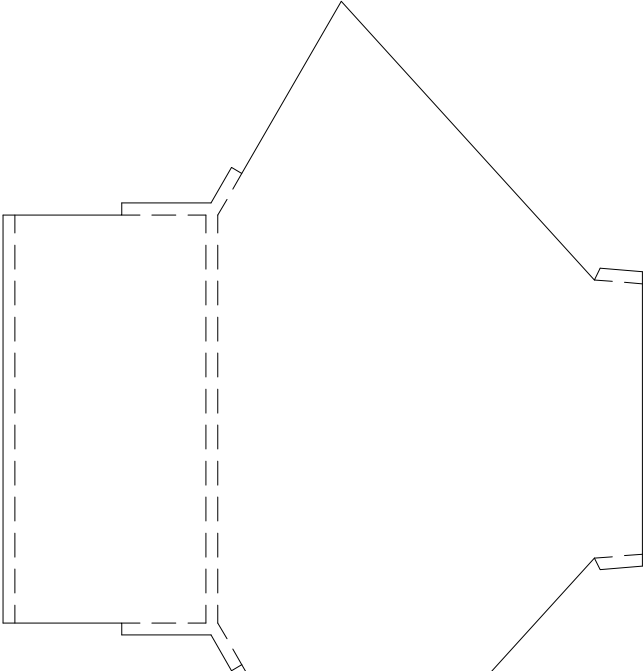
OUTLINE DEPENDS UPON CEILING LAYOUT



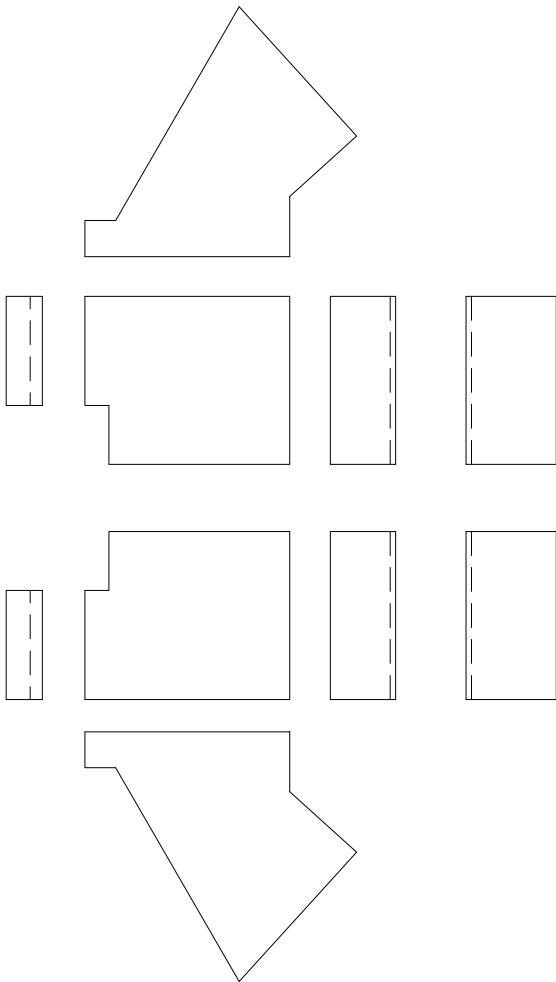
CUT TO ALLOW DOOR TO PASS FREELY



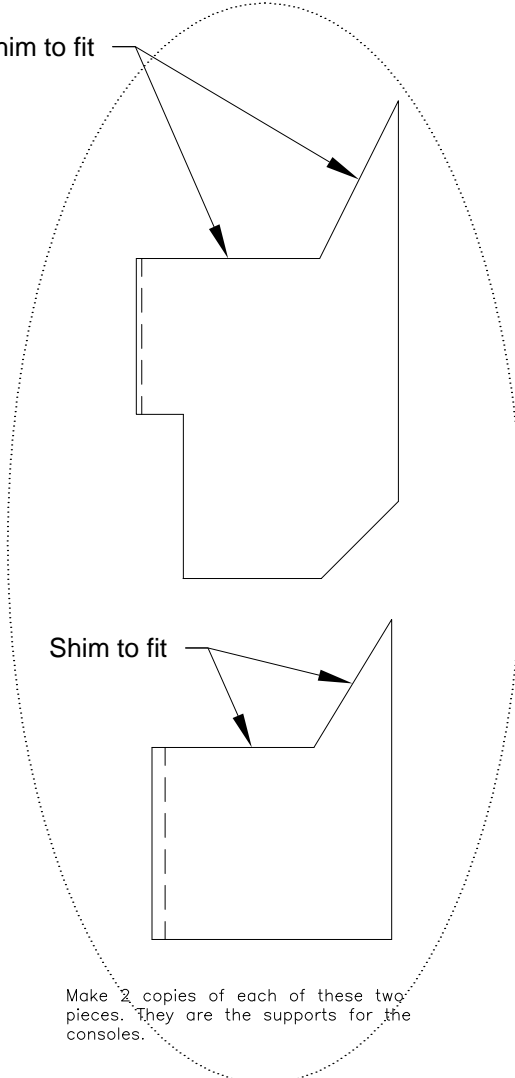
UNLESS NOTED, ALL PIECES ON THIS SHEET 0.06 STOCK



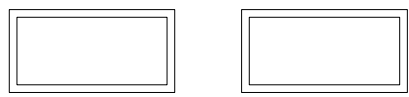
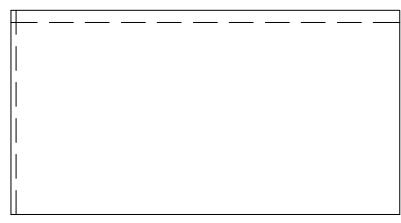
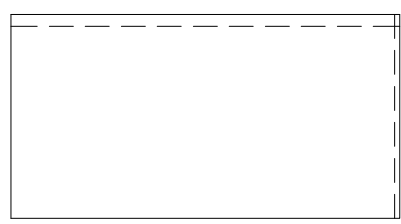
UNLESS NOTED, ALL PIECES ON THIS SHEET 0.06 STOCK



Shim to fit



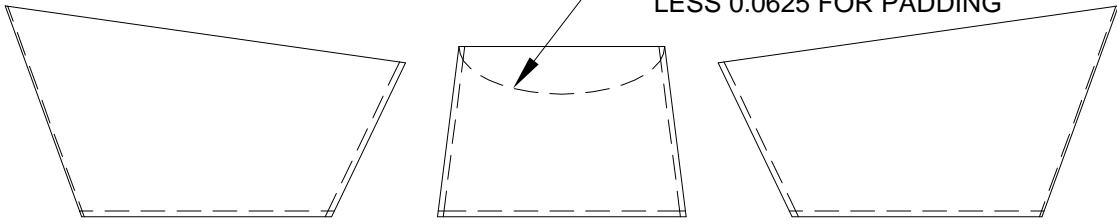
Make 2 copies of each of these two pieces. They are the supports for the consoles.



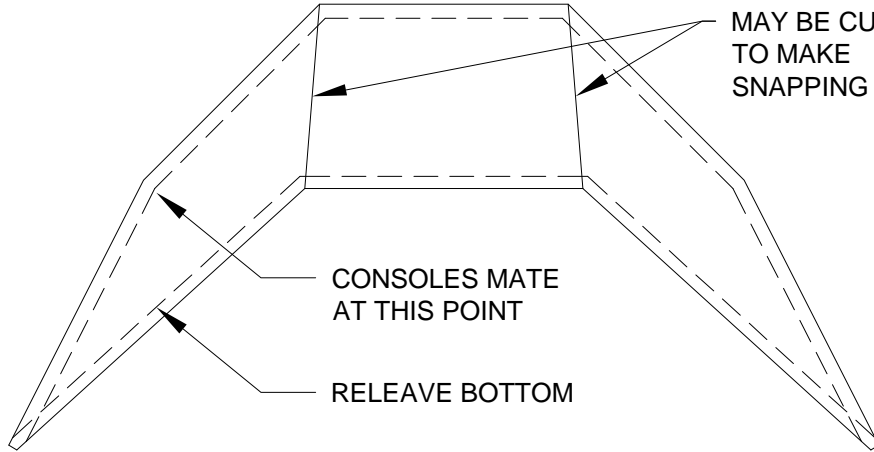
Make these pieces out of 0.02 - 0.03" thick stock

UNLESS NOTED, ALL PIECES ON THIS SHEET 0.06 CLEAR STOCK

CUT TO MATCH WINDOW
LESS 0.0625 FOR PADDING



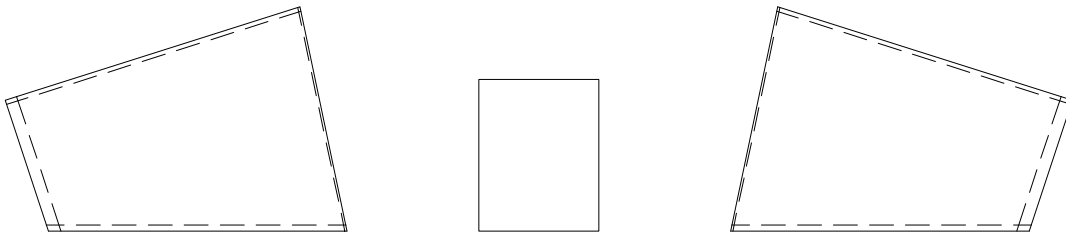
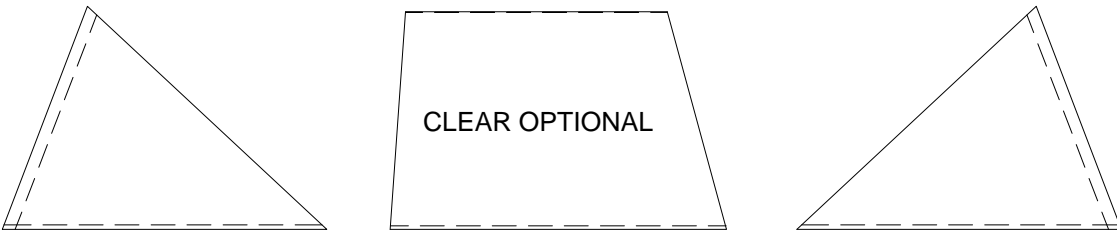
MAY BE CUT HERE
TO MAKE
SNAPPING EASIER



CONSOLES MATE
AT THIS POINT

RELEASE BOTTOM

CLEAR OPTIONAL



CLEAR OPTIONAL

CLEAR OPTIONAL

